



**Dodd and Struthers has a broad range of copper and aluminum cable as well as bonding strip for all types of applications.**

**Class 1 installations are those structures that are under 75 feet - residential, libraries, shopping malls, etc.**

**Class 11 are structures over 75 feet - high rise apartments, skyscrapers, cell towers, etc.**

\* - Denotes normally stocked items



**DODD & STRUTHERS LTD.**  
40 Tiffield Rd., Unit 7  
Toronto, Ontario M1V 5B6  
PH: 1-877-297-6030 FAX: 1-877-297-6040  
e-mail [marg@deltamanu.com](mailto:marg@deltamanu.com)  
[www.doddandstruthers.com](http://www.doddandstruthers.com)

## CABLE



### #31DS

#### 27 Strand

.046" diameter  
spiral centre strip  
63,800 circular mils  
Approximate weight per 1000 feet - 198 pounds  
Available in 500 foot reels.  
This good-looking smooth surface cable with a spiral ribbon core. This cable exceeds all requirements for structures up to 60 ft. \*



### #32DS

#### 31 Strand

.046" diameter  
spiral centre strip  
80,000 circular mils  
Approximate weight per 1000 feet - 250 pounds.  
Available in 500 foot reels.  
Jumbo Brand. Similar to #31DS except of weight suitable for structures over 60 feet. \*



### #33DS

#### 30 Strand

.057" diameter + 1 trailers  
spiral centre strip  
120,000 circular mils  
Approximate weight per 1000 feet - 375 pounds  
Available in 500 foot reels.  
Heavy6 oz. per foot. A 30 strand cable for smoke stack and other special applications. \*

\* - Denotes normally stocked items



DODD & STRUTHERS LTD.

40 Tiffield Rd., Unit 7

Toronto, Ontario M1V 5B6

PH: 1-877-297-6030 FAX: 1-877-297-6040

e-mail [marg@deltamanu.com](mailto:marg@deltamanu.com)

[www.doddandstruthers.com](http://www.doddandstruthers.com)

## CABLE



**#32S - Smooth Twist Copper Cable.** 32 strands of 17 gauge cable, 15/32" diameter, 65,600 circular mils, weight is 215 pounds per 1000 feet, No. 2 size. - Available in 250 foot and 500 foot reels.

**#32L - Smooth Twist Copper Cable** - Same as above but cable is tin coated, weight is 260 pounds per 1000 feet, No. 2 size. - 500 foot reels. \*



**#G1 - Rope Lay Copper Cable.** 24 strands of 14 gauge cable 1/2" diameter, 98,600 circular mils, weight is 325 pounds per 1000 feet, No. 1 size. - 500 foot reels.



**#36S - Smooth Twist Copper Cable.** 36 strands of 17 gauge cable, 1/2" diameter, 74,000 circular mils, weight is 245 pounds per 1000 feet. - 500 foot reels.



**#28S - Smooth Twist Copper Cable.** No. 3 size. 28 strand 17 gauge cable. Diameter 7/16". 57,400 circular mils. Net weight per 1,000 feet - 190 lbs. Exceeds Underwriters' Laboratories minimum requirements. Conductor is for use on Class I installations.



**#F31- Flat Braided Cable.** 32 strands of 17 gauge cable, 1" wide x 1/8" thick, weight is 205 lbs. per 1000 feet. 500 foot reels.

Any of the above cable can be supplied as tin coated.

\* - Denotes normally stocked items



**DODD & STRUTHERS LTD.**

40 Tiffield Rd., Unit 7

Toronto, Ontario M1V 5B6

PH: 1-877-297-6030 FAX: 1-877-297-6040

e-mail [marg@deltamanu.com](mailto:marg@deltamanu.com)

[www.doddandstruthers.com](http://www.doddandstruthers.com)

## CABLE



**#40 - Rope Lay Copper Cable.** 28 strands of .066 diameter cable, 1/2" diameter, 122,000 circular mils, weight is 375 pounds per 1000 feet, No. 1/0 size. Available in 250 foot and 500 foot reels.

**#40L - Rope Lay Copper Cable.** As above description, but cable is tin coated. Weight is 407 pounds per 1000 feet, No. 1/0 size. 500 foot reels.



**#G3 - Rope Lay Copper Cable.** 28 strands of .0865 diameter cable, 5/8" diameter, 211,600 circular mils, weight is 662 pounds per 1000 feet, No. 4/0 size. Standard spool length 250 feet.



**#21 - Rope Lay Copper Cable.** 30 strands of .066 diameter cable, 1/2" diameter, 133,500 circular mils, weight is 416 pounds per 1000 feet, No. 2/0 size. Standard spool length is 250 feet.

Any of the above cable can be supplied as tin coated.

\* - Denotes normally stocked items



**DODD & STRUTHERS LTD.**

40 Tiffield Rd., Unit 7

Toronto, Ontario M1V 5B6

PH: 1-877-297-6030 FAX: 1-877-297-6040

e-mail [marg@deltamanu.com](mailto:marg@deltamanu.com)

[www.doddandstruthers.com](http://www.doddandstruthers.com)

## CABLE



**#A28 - Smooth Twist Aluminum Cable.** 28 strands of 14 gauge cable, 5/8" diameter, 115,080 circular mils, weight is 130 pounds per 1000 feet, No. 1/0 size.  
500 foot reels - \*



**#A30 - Peerless Heavy Duty Aluminum Cable.** 37 strands of .0756 diameter cable, 211,600 circular mils, weight is 200 pounds for 1000 feet, No. 4/0 size.  
500 foot reels - \*.

\* - Denotes normally stocked items



DODD & STRUTHERS LTD.

40 Tiffield Rd., Unit 7

Toronto, Ontario M1V 5B6

PH: 1-877-297-6030 FAX: 1-877-297-6040

e-mail [marg@deltamanu.com](mailto:marg@deltamanu.com)

[www.doddandstruthers.com](http://www.doddandstruthers.com)



## CONNECTING AND BONDING CABLES



**#22 - Copper Connecting Cable.** 14 strands of 17 gauge cable, 1/4" diameter, 28,500 circular mils, weight is 90 pounds per 1000 feet, No. 6 size.  
Spool size - 500 feet.



**#A22 - Aluminum Connecting Cable.** 10 strands of 14 gauge cable, 5/16" diameter, 43,000 circular mils, weight is 39 pounds per 1000 feet, No. 4 size.  
Spool size - 500 feet.



**#45T - Flexible Copper Bonding Cable** - 480 strands of 30 gauge copper tinned, 3/4" wide x 1/8" thick, 48,000 circular mils, weight is 160 pounds per 1000 feet. \*

**#A45 - Flexible Aluminum Bonding Cable.** Same as #45T above except in aluminum, weight is 50 lbs. per 1000 feet. Standard spool size for A45 is 250 feet.



**#184TDS Flexible Tinned Copper Bonding Connector.** 480 strands of 30 gauge tinned copper, 3/4" wide x 1/8" thick, 48,000 circular mils. Standard #184 strap is 3/4" wide by 11" overall length of 10" from centre hole to centre hole. Bolt holes will accept up to 3/8" diameter bolt. Connector is used for bonding metal doors to door frames. Other lengths available upon request. For more detailed picture of cable portion, see #45 above. Weight is .16 pounds each.

**#A184 - Flexible aluminum Bonding Connector.** Same as #184T above except in aluminum. Weight is .06 pounds each.

\* - Denotes normally stocked items



DODD & STRUTHERS LTD.

40 Tiffield Rd., Unit 7

Toronto, Ontario M1V 5B6

PH: 1-877-297-6030 FAX: 1-877-297-6040

e-mail [marg@deltamanu.com](mailto:marg@deltamanu.com)

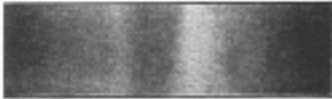
[www.doddandstruthers.com](http://www.doddandstruthers.com)



**#48A - Plain Soft Copper Bonding Strip.** 5/8" wide x 16 B & S gauge, round edge, 41,740 circular mils, weight is 128 lbs. per 1000 feet. \* - Available in 50 foot coils.

**#A48 - Soft Aluminum Bonding Strip.** 5/8" wide x 14 B & S gauge. 41,740 circular mils, weight is 48 pounds per 1000 feet. \* - Available in 50 foot coils.

**#48B - Soft Copper Bonding Strip.** Same as #48A above except strip is tinned, weight is 120 pounds per 1000 feet. - Available in 50 foot coils.



**#49 - Plain Soft Copper Bonding Strip.** 1" wide x 16 B & S gauge, rounded edge, 59,000 circular mils, weight is 193 lbs. per 1000 feet. \* - Available in 100 foot coils.

**#A49 - Soft Aluminum Bonding Strip.** 1" x 14 B & S gauge, round edge, 59,000 circular mils, weight is 73 lb. per 1000 feet. \* - Available in 50 foot coils.

**#49X - Soft Copper Bonding Strip.** Same as #49 above except strip is tinned, weight is 200 pounds per 1000 feet. \* - Available in 50 foot coils.



**#49Y Wide Soft Copper Bonding Strap.** 1-3/4" wide x 14 B & S gauge, rounded edge and tin coated for bonding to pipe. Weight is .44 lb. per foot. - Available in 50 foot coils.



**#789 Plain Copper Bonding Wire.** Wire is plain and soft drawn. Diameter is .167, 26,250 circular mils. Wire is furnished in custom lengths as required. Weight is 80 pounds per 1000 feet.

**#789X - Copper Bonding Wire, Tinned.** Same as #789 above except wire is tinned, weight is 90 pounds per 1000 feet.

\* - Denotes normally stocked items



**DODD & STRUTHERS LTD.**

40 Tiffield Rd., Unit 7

Toronto, Ontario M1V 5B6

PH: 1-877-297-6030 FAX: 1-877-297-6040

e-mail [marg@deltamanu.com](mailto:marg@deltamanu.com)

[www.doddandstruthers.com](http://www.doddandstruthers.com)



## CONNECTING AND BONDING CABLES



**#G5 - Copper Bonding Wire.** Plain, soft drawn copper, .200 diameter, 41,800 circular mils. Wire is furnished in custom lengths as required. Weight is 125 pounds per 1000 feet, No. 4 size.

**#AG5 - Aluminum Bonding Wire.** Weight is 39 pounds per 1000 feet, No. 4.

\* - Denotes normally stocked items



**DODD & STRUTHERS LTD.**

40 Tiffield Rd., Unit 7

Toronto, Ontario M1V 5B6

PH: 1-877-297-6030 FAX: 1-877-297-6040

e-mail [marg@deltamanu.com](mailto:marg@deltamanu.com)

[www.doddandstruthers.com](http://www.doddandstruthers.com)